

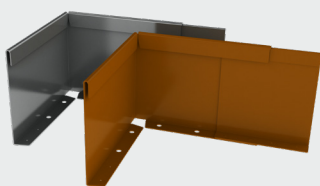
Kit Includes:

- 1 x 2200mm length with pre-attached joiner
- 3 x 185mm braces
- 3 x 300mm twisted nails

Specifications:

Length	2200mm (2285mm including Joiner)
Height	185mm
Top Thickness	8.2mm
Material Thickness	2.0mm Weathering or Galvanized Steel

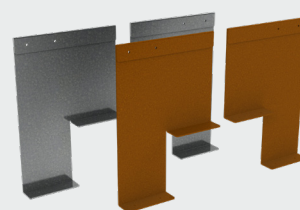
OPTIONAL ACCESSORIES



Premanufactured Corner



Premanufactured Reverse Corner



Adaptor Joiners 150mm to 250mm