



Assembled Habitat Pod

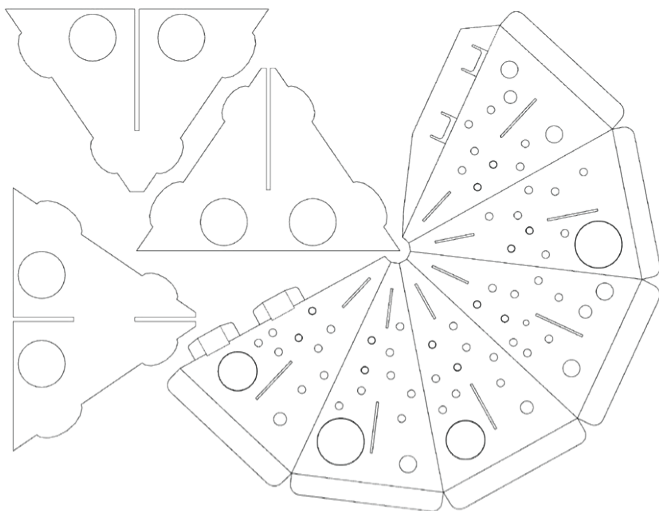
Habitat Pod

Product Specifications

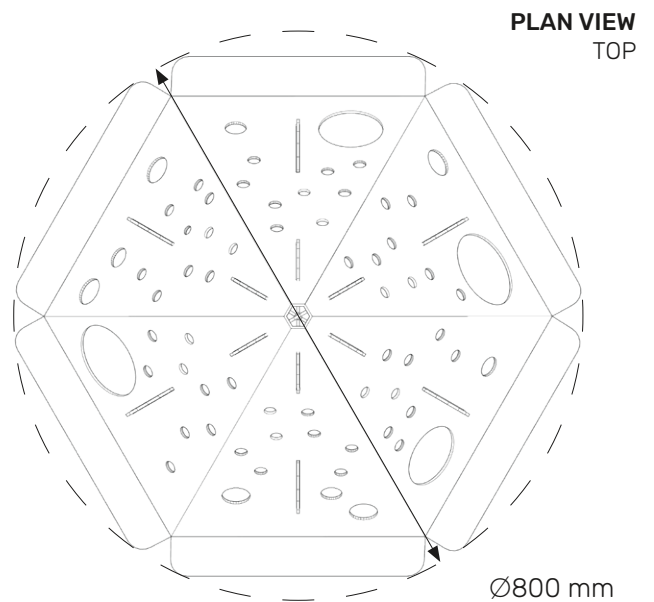
ReHabitat pods are flat-packed cardboard emergency shelters designed to support wildlife in the aftermath of bushfires, floods, or other habitat destruction. In the crucial post-fire period, these biodegradable shelters provide protection from predators and the elements while vegetation recovers. Rather than being removed, the pods are designed to decompose naturally, allowing regenerating plants to grow through and around them, ultimately restoring natural habitat.

MATERIAL	EB fluted cardboard
PRODUCT WEIGHT	830 g
No. OF UNITS/PALLET	250
SECURING METHOD	Stakes; biodegradable pegs; rocks

DELIVERY COMPONENTS



PLAN VIEW
SIDE



PLAN VIEW
TOP



Assembled Plant Pod

Plant Pod

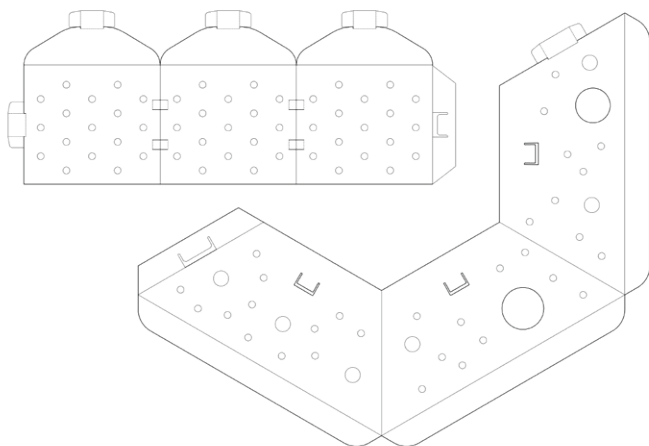
Product Specifications

ReHabitat Plant Pods are dual-function, biodegradable habitat units that integrate seedling protection with ground-level habitat, supporting biodiversity during vegetation establishment.

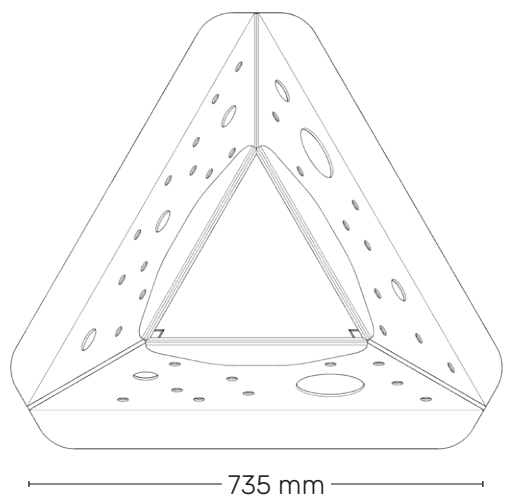
They are lightweight, flat-packed, and easily assembled on-site near deployment areas. Constructed entirely from natural cardboard, they contain no glues, dyes, staples, or other non-biodegradable materials.

MATERIAL	EB fluted cardboard
PRODUCT WEIGHT	880 g
No. OF UNITS/PALLET	250
SECURING METHOD	Stakes; biodegradable pegs; rocks

DELIVERY COMPONENTS



PLAN VIEW
TOP



PLAN VIEW
SIDE

