

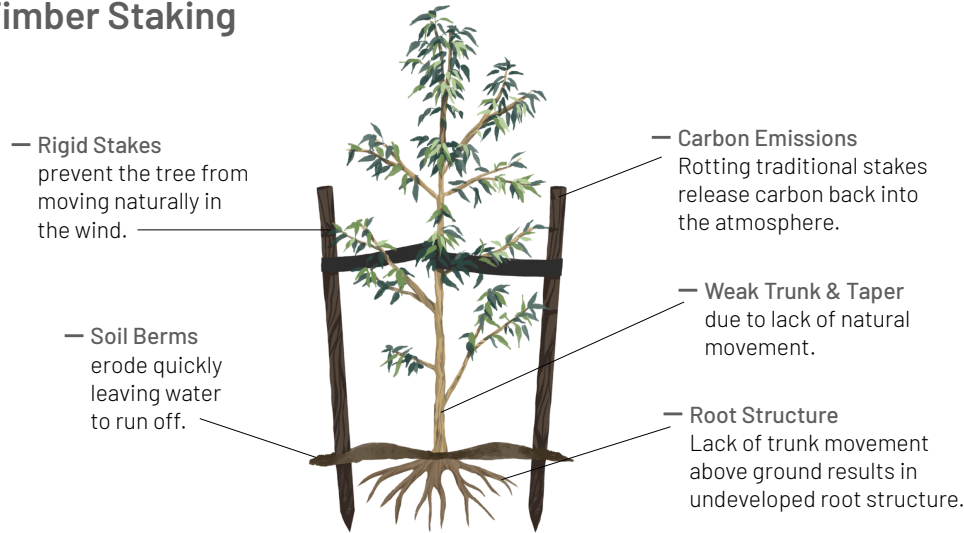
# TREE COACH® BIO COST COMPARISON (45L planting)

Drive sustainability from the ground up with Tree Coach® BIO.

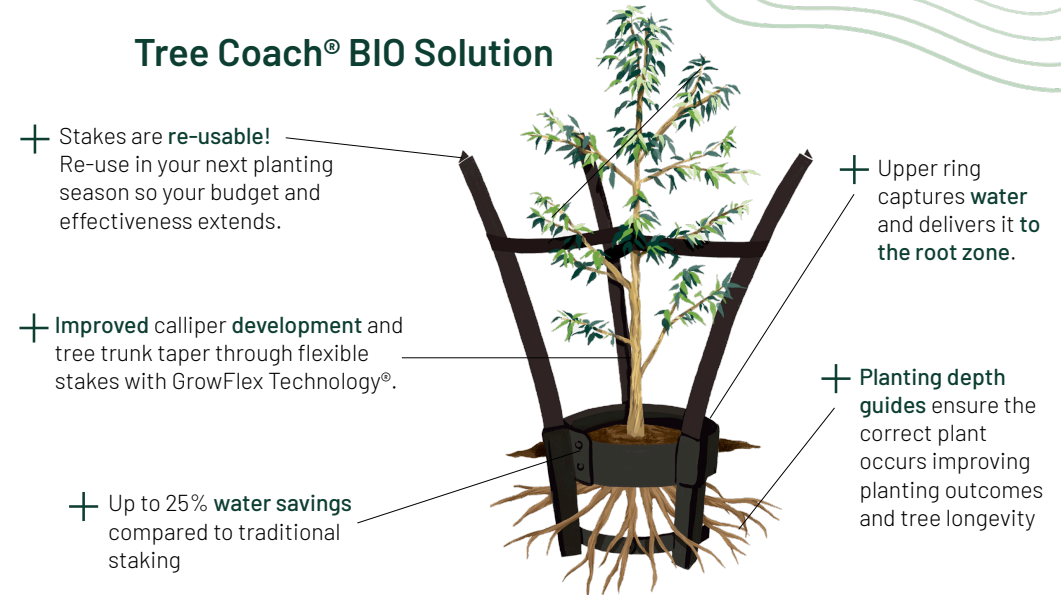
Superior trees, lower failure rates and better disposal practices.



## Timber Staking



## Tree Coach® BIO Solution



45L PLANTING	COMPONENT (Labour & Materials)	COST
1ST SEASON	Soil Berm / Proprietary Bowl	\$15.50
	Black Timber Stakes x 3	\$36.00
	Tree Ties x 3	\$10.50
	<b>TOTAL</b>	<b>\$62.00</b>
2ND SEASON	Soil Berm / Proprietary Bowl	\$15.50
	Black Timber Stakes x 3	\$36.00
	Tree Ties x 3	\$10.50
	<b>TOTAL</b>	<b>\$62.00</b>
<b>TOTAL COSTS FOR 1ST &amp; 2ND SEASON</b>		<b>\$124.00</b>

45L PLANTING	COMPONENT (Labour & Materials)	COST
1ST SEASON	LARGE Tree Coach® BIO ( 18L - 45L )	\$32.00
	Stakes included	\$0.00
	Tree Ties x 3	\$10.50
<b>TOTAL</b>	<b>\$42.50</b>	
2ND SEASON	LARGE Tree Coach® BIO ( 18L - 45L )	\$32.00
	<b>RE-USE Tree Coach Stakes x 3</b>	<b>-\$12.80</b>
	Tree Ties x 3	\$10.50
	<b>TOTAL</b>	<b>\$29.70</b>
<b>TOTAL COSTS FOR 1ST &amp; 2ND SEASON</b>		<b>\$72.20</b>

Costs above do not include savings from Injury Risk Reduction, Claims Reductions and Return on Investment from safer product handling.

**POTENTIAL SAVING PER TREE \$51.80**

Disclaimer: Tree Coach product, published data and estimates may vary based on planting practice, geographical locations and planting conditions.

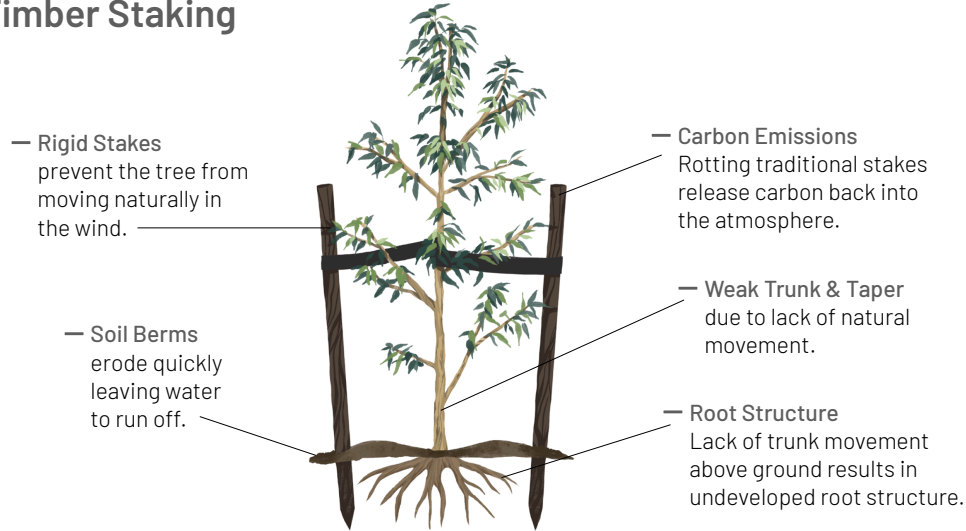
# TREE COACH® BIO COST COMPARISON (45L planting)

Drive sustainability from the ground up with Tree Coach® BIO.

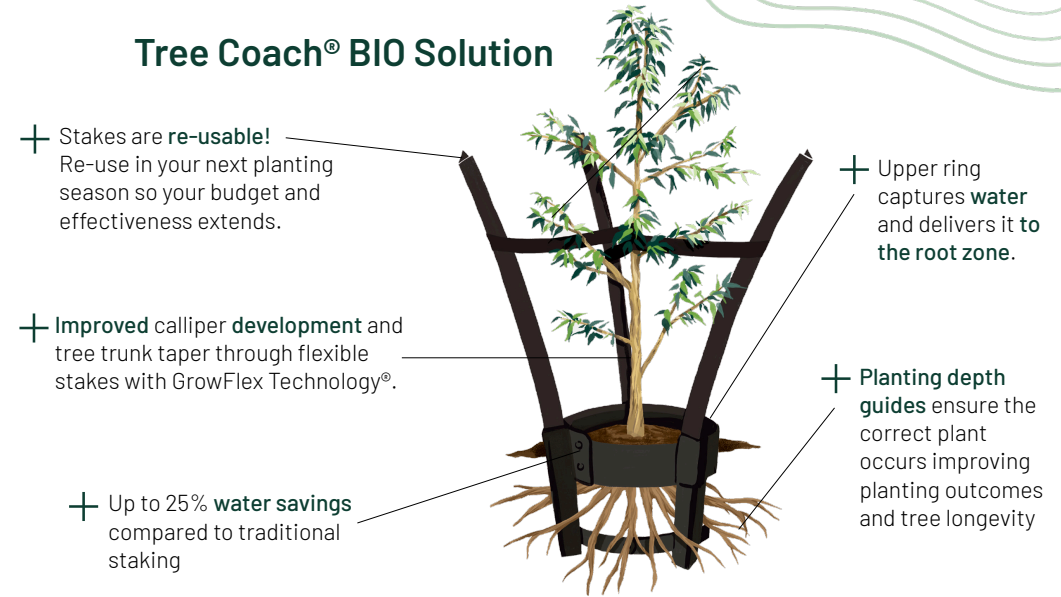
Superior trees, lower failure rates and better disposal practices.



## Timber Staking



## Tree Coach® BIO Solution



45L PLANTING	COMPONENT (Labour & Materials)	COST
1ST SEASON	Soil Berm / Proprietary Bowl	\$15.50
	Black Timber Stakes x 2	\$24.00
	Tree Ties x 2	\$7.00
	<b>TOTAL</b>	<b>\$46.50</b>
2ND SEASON	Soil Berm / Proprietary Bowl	\$15.50
	Black Timber Stakes x 2	\$24.00
	Tree Ties x 2	\$7.00
	<b>TOTAL</b>	<b>\$46.50</b>
<b>TOTAL COSTS FOR 1ST &amp; 2ND SEASON</b>		<b>\$93.00</b>

45L PLANTING	COMPONENT (Labour & Materials)	COST
1ST SEASON	LARGE Tree Coach® BIO ( 18L - 45L )	\$32.00
	Stakes included	\$0.00
	Tree Ties x 3	\$10.50
<b>TOTAL</b>	<b>\$42.50</b>	
2ND SEASON	LARGE Tree Coach® BIO ( 18L - 45L )	\$32.00
	<b>RE-USE Tree Coach Stakes x 3</b>	<b>-\$12.80</b>
	Tree Ties x 3	\$10.50
	<b>TOTAL</b>	<b>\$29.70</b>
<b>TOTAL COSTS FOR 1ST &amp; 2ND SEASON</b>		<b>\$72.20</b>

Costs above do not include savings from Injury Risk Reduction, Claims Reductions and Return on Investment from safer product handling.

**POTENTIAL SAVING PER TREE \$20.80**

Disclaimer: Tree Coach product, published data and estimates may vary based on planting practice, geographical locations and planting conditions.