

***A QUICKER, SMARTER AND CLEANER WAY TO SECURE YOUR SITE***



**MESHMATE<sup>®</sup>**

**BY  
MESHMATE  
INDUSTRIES**



**Scan to watch how  
quick it is to install**



[linkedin.com/company/stratagreen](https://www.linkedin.com/company/stratagreen)



[www.stratagreen.com.au](http://www.stratagreen.com.au)



# MESHMATE<sup>®</sup>

*Site Safety Made Simple.*

MeshMate<sup>®</sup> is a better way to install mesh barriers.

Our patented plastic sleeve fits over 900mm star pickets and locks the mesh into place with our new button lock system.

- Fast setup
- Cleaner and safer sites
- Zero waste and mess
- Easy to store and transport
- Aussie made and assembled

## TRUSTED BY



## ENQUIRIES

Work: 1300 866 367 5 Barrel Way, Canning Vale, Western Australia 6155  
[info@stratagreen.com.au](mailto:info@stratagreen.com.au) [www.stratagreen.com.au](http://www.stratagreen.com.au)



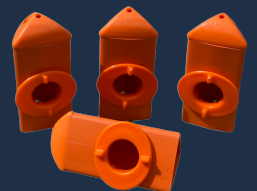
**JoinMate™**

Eliminates the need for cable ties or tape



**BaseMate™**

Eliminates the need to dial before you dig.



**MiniMate™**

A picket cap which also hold flag rope and mesh